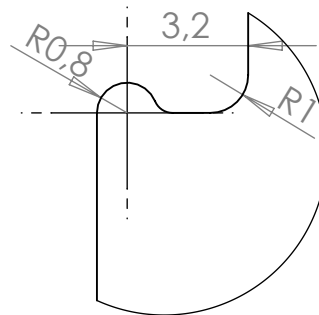



Recommended torque:
25 Newton meters



DETAIL A
RATIO 5 : 1

IMPORTANT:
The lower contact part
(HEL-4871.1-KD, PN: A25300-000) must be
used to achieve the specified cross-sections.

3	Pressure pad, tin-plated made from brass
2	Screw M14x1,5 with SW 6mm, tin-plated and lubricated made from brass
1	Frame made from extrusion profile AL-alloy

BURR PROJECTION:		DEBUR AND BREAK SHARP EDGES		DO NOT SCALE DRAWING		REVISION: 1	
FORM BOUND MEASURE:		DIMENSION: mm		This Information is confidential and proprietary to Tyco Electronics Corporation and it's subsidiaries and affiliates. It may not be disclosed to anyone, other than Tyco Electronics personnel, without written authorization from Tyco Electronics Corporation, Harrisburg, Pennsylvania USA.			
NOT FORM BOUND MEASURE:				DESCRIPTION: Bow type-direct terminal clamp HEL-4871.1-1; RPN: D07443-000 HEL-4871.1-3; RPN: F83383-000 (3pc in foil) for conductor cross section:95-240 SM			
NAME	SIGNATURE	DATE					
DRAWN S. Pollakowski		27.07.2021					
CHK'D							
APPV'D							
 Tyco Electronics Raychem GmbH a TE Connectivity Ltd. company Trachenberggring 85 12249 Berlin (Germany)			WEIGHT:	0,137kg	DWG NO.	C-HEL-4871.1-1_3	A4
			SCALE:	1:1	SHEET:	1 OF 1	