

MECHANICAL TERMINAL LUGS TYPE CC, CD, CT, CE AND JOINTS TYPE CG, CH FOR COPPER EARTHING CABLES

KEY FEATURES

- Wide application range
- Can be used with copper conductors as per IEC 228A class 1 and 2
- No special tooling required for installation
- Comply with NFC 33-061 class C

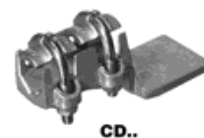
TE Connectivity's (TE) mechanical terminal lugs type CC, CT, CE and joints type CG, CH are designed for use with copper earthing cables.

Our lugs cover copper conductors ranging from 10 mm² to 300 mm². Lugs are available with straight palm (CC-CD), right-angle palm (CE) and flag type palm (CT). Our joints cover copper conductors ranging from 10 mm² to 150 mm². Straight joints (CG) tap-off joints (CH) are available. The full range of lugs and joints allow for multiple applications.

Made of brass, our lug and joint bodies have high capacities to flow fault-current. They are available with steel or brass U-bolt for efficient tightening and all parts are supplied with a reversible cap that allows for wide range-taking capability.

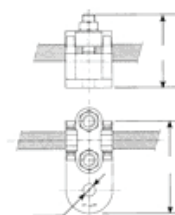
Customers can count on consistent, high quality products, driven by TE's proven innovation and backed by our extraordinary customer support.

Mechanical Terminal Lugs



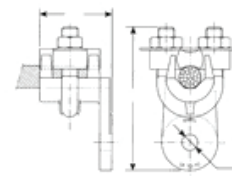
ROUND OR SQUARE OFFSET STRAIGHT PALM LUGS (CC - CD)

Designation	Cross-section (mm ²)	Dimensions (mm)			Weight (g)	Std. Packaging
		L	H	B		
Steel U-Bolt						
CC 10-70 A D 9	10 to 70	52	39	9	74.6	25
CC 10-70 A D 11	10 to 70	52	39	11	73.4	25
CC 10-70 A D 13	10 to 70	52	39	13	71.2	25
CC 10-70 A D 15	10 to 70	52	39	15	70	25
CC 25-120 A	25 to 120	68	50	13	190	10
CC 70-150 A	70 to 150	77	56	13	237	10
CC 150-300 A	150 to 300	120	67	13	525	1
CD 150-300 A	150 to 300	130	67	WH	525	1
Brass U-Bolt						
CC 10-70 B D 9	10 to 70	52	39	9	77	25
CC 10-70 B D 11	10 to 70	52	39	11	77	25
CC 10-70 B D 13	10 to 70	52	39	13	73	25
CC 10-70 B D 15	10 to 70	52	39	15	70.6	25
CC 25-120 B	25 to 120	68	50	13	198.4	25
CC 70-150 B	70 to 150	77	56	13	243.3	10
CC 150-300 B	150 to 300	120	67	13	520	1
CD 150-300 B	150 to 300	130	67	WH	625	1



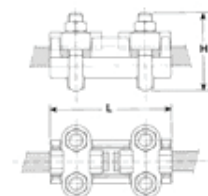
ROUND OFFSET FLAG TYPE PALM LUGS (CT)

Designation	Cross-section (mm ²)	Dimensions (mm)			Weight (g)	Std. Packaging
		L	H	B		
Steel U-Bolt						
CT 10-70 A D 9	10 to 70	50	38	9	86.2	25
CT 10-70 A D 11	10 to 70	50	38	11	85	25
CT 25-120 A	25 to 120	75	50	13	208	10
Brass U-Bolt						
CT 10-70 B D 9	10 to 70	50	38	9	88.4	25
CT 10-70 B D 11	10 to 70	50	38	11	87.2	25
CT 25-120 B	25 to 120	75	50	13	219	10



ROUND OFFSET RIGHT-ANGLE PALM LUGS (CE)

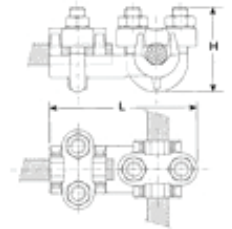
Designation	Cross-section (mm ²)	Dimensions (mm)			Weight (g)	Std. Packaging
		L	H	B		
Steel U-Bolt						
CE 10-70 A D 9	10 to 70	60	28	9	715	10
CE 10-70 A D 11	10 to 70	60	28	11	700	10
CE 25-120 A	25 to 120	82	32	13	176	5
Brass U-Bolt						
CE 10-70 B D 9	10 to 70	60	28	9	74.5	10
CE 10-70 B D 11	10 to 70	60	28	11	742	10
CE 25-120 B	25 to 120	82	32	13	184	5
CF 150-300 B	150 to 300	95	77	WH	688	1



STRAIGHT JUNCTION (CG)

Designation	Cross-section (mm ²)	Dimensions (mm)		Weight (g)	Std. Packaging
		L	H		
Steel U-Bolt					
CG 10-70 A	10 to 70	50	35	105.5	10
CG 25-120 A	25 to 120	65	48	276	5
Brass U-Bolt					
CG 10-70 B	10 to 70	50	35	108.5	10
CG 25-120 B	25 to 120	65	48	301	5

Mechanical Terminal Lugs



TEE JUNCTION (CH)

Designation	Cross-section (mm ²)	Dimensions (mm)		Weight (g)	Std. Packaging
		L	H		
Steel U-Bolt					
CH 10-70 A	10 to 70	54	35	109.5	10
CH 25-120 A	25 to 120	73	48	294.5	10
Brass U-Bolt					
CH 10-70 B	10 to 70	54	35	112.5	10
CH 25-120 B	25 to 120	73	48	-	10
CH 70-150 B	70 to 150	80	53	360	5

te.com/energy

© 2020 TE Connectivity. All Rights Reserved. EPP-3603-DDS-9/20-EN

TE Connectivity, TE connectivity (logo), EVERY CONNECTION COUNTS, AMP, AMPACT, Axicom, Bowthorpe EMP, Crompton Instruments, Raychem, SIMEL, UTILUX are trademarks. Other logos, product and Company names mentioned herein may be trademarks of their respective owners. While TE has made every reasonable effort to ensure the accuracy of the information in this brochure, TE does not guarantee that it is error-free, nor does TE make any other representation, warranty or guarantee that the information is accurate, correct, reliable or current. TE reserves the right to make any adjustments to the information contained herein at any time without notice. TE expressly disclaims all implied warranties regarding the information contained herein, including, but not limited to, any implied warranties of merchantability or fitness for a particular purpose. The dimensions in this brochure are for reference purposes only and are subject to change without notice. Specifications are subject to change without notice. Consult TE for the latest dimensions and design specifications.

FOR MORE INFORMATION: TE Technical Support Centers

USA/Canada:	+1 800-327-6996
Brazil:	+55 11-2103-6023
Mexico:	+52 55-1106-0800
South America:	+57 1-319-8962
Benelux:	+32 16-508-695
France:	+33 (0) 38-058-3210
Germany/Switzerland:	+49 (0) 89-608-9903
Italy:	+39 335-834-3453
Middle East/Africa:	+971 4-211-7020
Russia:	+7 495-790-790-2-200
Spain/Portugal:	+34 912-681-885
UK:	+44 08708-707-500
China:	+86 400-820-6015