

THIS DRAWING IS UNPUBLISHED.
DIFFUSION RESTREINTE

RELEASED FOR PUBLICATION
LIBRE A LA DIFFUSION

20

ALL RIGHTS RESERVED.
TOUS DROITS RESERVES

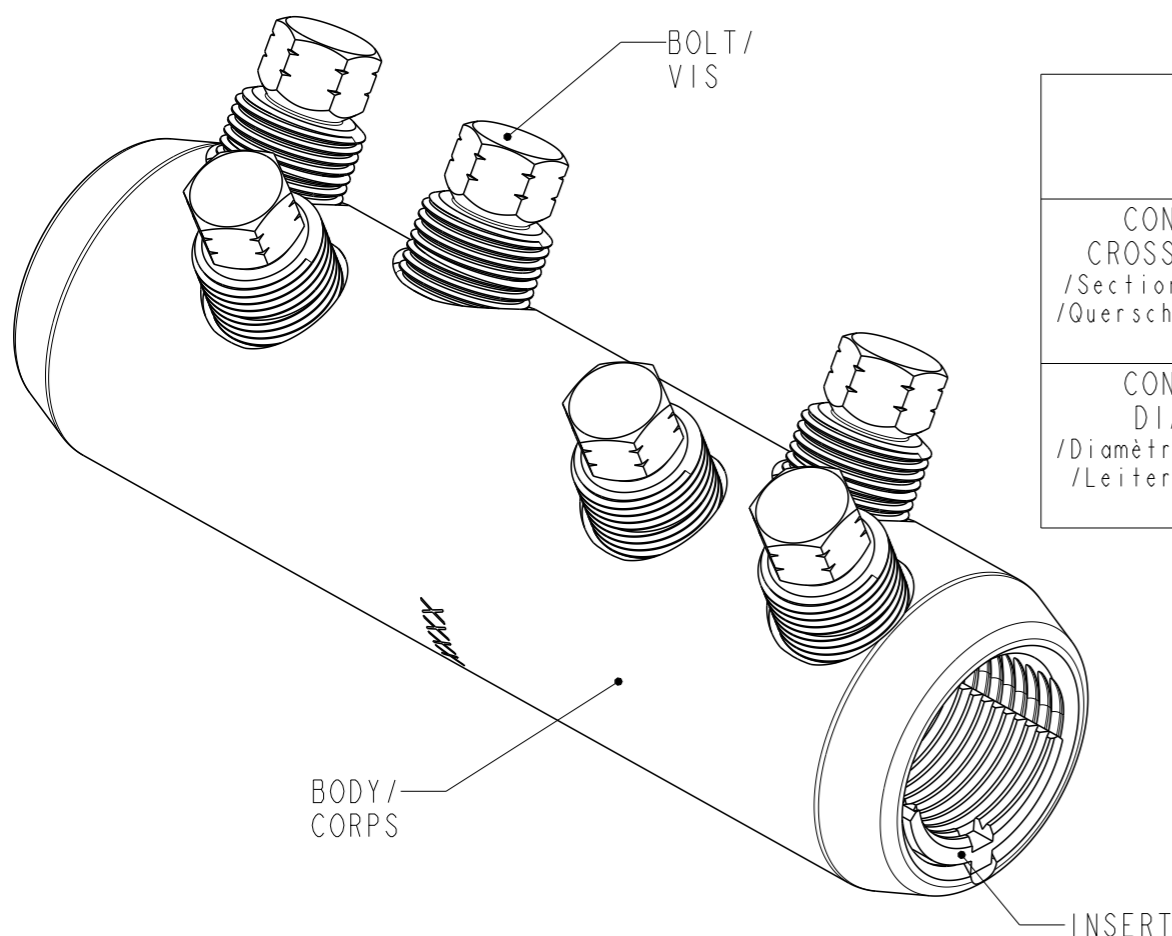
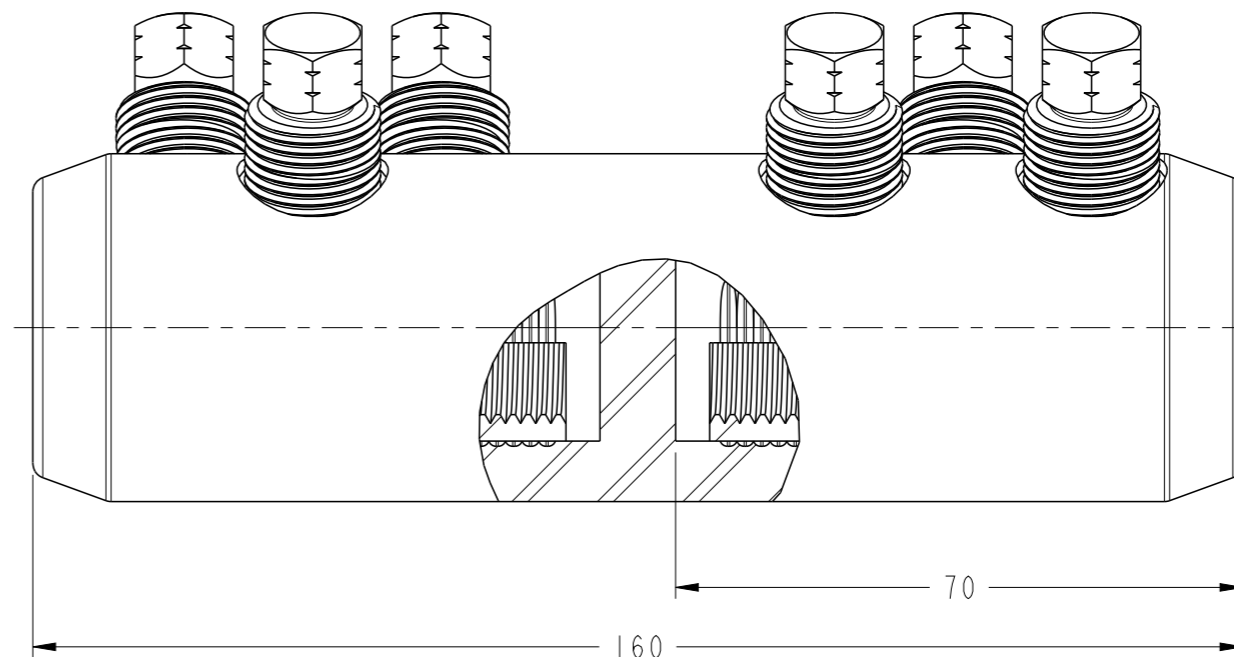
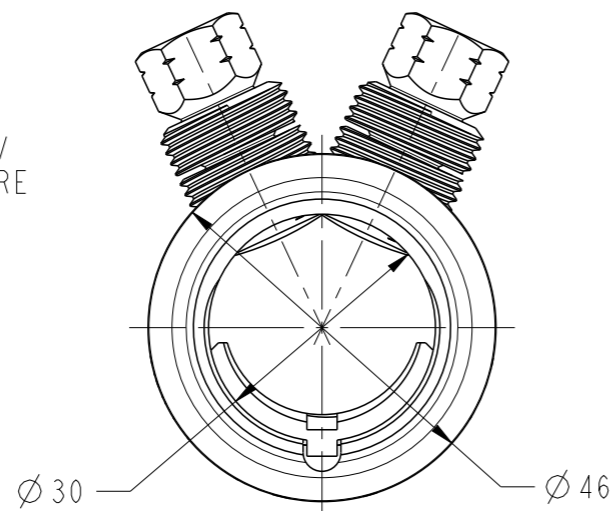
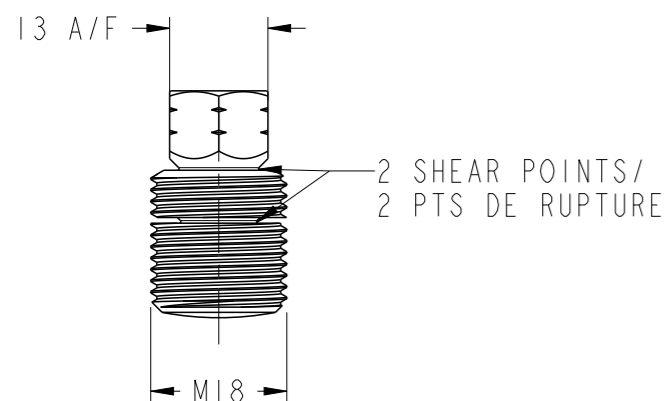
© COPYRIGHT 20

LOC DIST
FH 2

REVISIONS

P	LTR REV	DESCRIPTION MODIFICATIONS	DATE	DWN DESS.	APVD APP.
	A	CREATION	22FEB2012	BM	NA
	B	ECR-17-013070	06SEP2017	JB	AG

BSMB-300/500 MK2	2107355-2
DESCRIPTION	PART NUMBER



	AL				CU	
	ROUND STRANDED /Rond câblé /RM	ROUND SOLID /Rond solide /RE	SECTOR STRANDED /Sectoral câblé /SM	SECTOR SOLID /Sectoral câblé /SE	ROUND STRANDED /Rond câblé /RM	SECTOR STRANDED /Sectoral câblé /SM
CONDUCTOR CROSS-SECTION /Section conducteur /Querschnittsbereich mm ²	300-500	300-500	300	300	300-500	-
CONDUCTOR DIAMETER /Diamètre conducteur /Leiterdurchmesser mm	Ø19.7-Ø28.9	Ø18.8-Ø25.1	-	-	Ø19.7-Ø28.6	-

TOLERANCES UNLESS OTHERWISE SPECIFIED: -
TOLERANCES NON SPECIFIEES: -

THIS DRAWING IS A CONTROLLED DOCUMENT.
CE PLAN EST UN DOCUMENT CONTROLE PAR TYCO ELECTRONICS CORPORATION.
IL EST SUSCEPTIBLE D'ETRE REVISE. POUR OBTENIR LA DERNIERE REVISION,
CONTACTER LE SERVICE TECHNIQUE DE TYCO ELECTRONICS SIMEL SAS,
21220 GEVREY-CHAMBERTIN, FRANCE.

DWN/DESSINE 22FEB2012

B. MILLOT

CHK/VERIFIE -

N. EVANS

APVD/APPROUVE -

N. ALMEIDA

PRODUCT SPEC -

SPEC. PRODUIT -

APPLICATION SPEC -

SPEC. APPLICATION -

SIZE FORMAT A3	CAGE CODE -	DRAWING NO No PLAN C=2107355-2	RESTRICTED TO RESERVE A -
-------------------	----------------	--------------------------------------	------------------------------

DIMENSIONS: mm	TOLERANCES UNLESS OTHERWISE SPECIFIED: TOLERANCES NON SPECIFIEES (SUIV NB DE DECIMALES): 0 PLC/DEC: ±0 1 PLC/DEC: ±0 2 PLC/DEC: ±0 3 PLC/DEC: ±0 4 PLC/DEC: ±0 ANGLES ±
-------------------	--

MATERIAL MATIERE AL ALLOY	FINISH FINITION TINNED
------------------------------	---------------------------

WEIGHT MASSE APPROX. 511

CUSTOMER DRAWING /PLAN CLIENT	UNIQUEMENT POUR REFERENCE	SCALE ECHELLE	SHEET FEUILLE	OF DE	REV B
-------------------------------	---------------------------	---------------	---------------	-------	-------